

- 1
- 2
- 3
- 4
- 5
- 6
- 7
- 8
- 9
- 10
- 11
- 12
- 13
- 14
- 15
- 16
- 17
- 18
- 19

MATERIAL

Aluminium

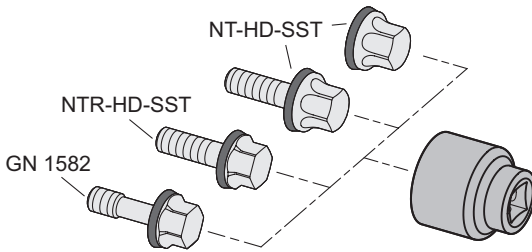
FEATURES AND APPLICATIONS

GN 3124 key inserts are used to install the standard Hygienic Design components listed in the table. In combination with the aluminium material used, the rounded hexagonal geometry of the key seats transfers the torque to the screw head without damaging it.

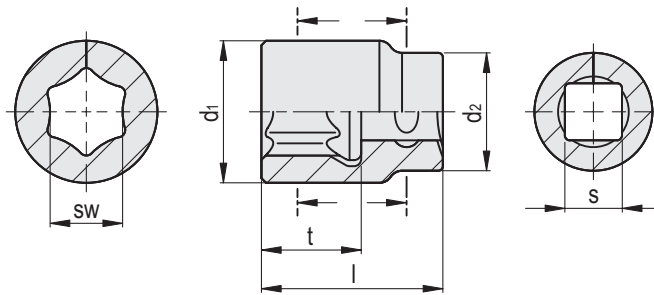
If the specified torque values are observed, the socket spanner inserts will have a longer service life. They are operated with commercially available ratchet spanners or reversible ratchet spanners with square drive.



Application examples



Conversion Table	
1 mm = 0.039 inch	
d1	
mm	inch
18	0.70
19	0.74
22	0.86
23	0.90
25	0.98
29	1.13
31	1.21
38	1.48
40	1.56
44	1.72
47	1.83



METRIC

Code	Description	d1	d2	l	t	s	Equivalent in inches	sw	Max. torque [Nm]	For screws and nuts NT-HD-SST	For screws NTR-HD-SST	For screws GN 1582	For latches GN 1150	
GN.81001	GN 3124-7-6,3-K-AL	18	13	19.5	10.5	6.3	1/4	7	1.3	M 4	M 4	-	-	9
GN.81002	GN 3124-8-6,3-K-AL	19	13	20	11	6.3	1/4	8	2.5	M 5	M 5	M 5	-	10
GN.81003	GN 3124-10-6,3-K-AL	22	13	21.5	12.5	6.3	1/4	10	4.4	M 6	M 6	M 6	-	13
GN.81004	GN 3124-11-6,3-K-AL	23	13	22.5	13.5	6.3	1/4	11	2.5	-	-	-	d1 = 22	15
GN.81005	GN 3124-13-6,3-K-AL	25	13	25	16	6.3	1/4	13	11	M 8	M 8	M 8	d1 = 30	18
GN.81006	GN 3124-16-12,5-K-AL	29	29	36	20	12.5	1/2	16	21	M 10	M 10	M 10	-	42
GN.81007	GN 3124-18-12,5-K-AL	31	30	37.5	21.5	12.5	1/2	18	38	M 12	M 12	-	-	48
GN.81008	GN 3124-22-12,5-K-AL	38	30	41	25	12.5	1/2	22	100	-	M 16	-	-	71
GN.81009	GN 3124-24-12,5-K-AL	40	30	43	27	12.5	1/2	24	94	M 16	-	-	-	79
GN.81010	GN 3124-27-12,5-K-AL	44	30	47	31	12.5	1/2	27	100	-	M 20	-	-	99
GN.81011	GN 3124-30-12,5-K-AL	47	30	48.5	32.5	12.5	1/2	30	100	M 20	-	-	-	109

Levelling feet and supports